

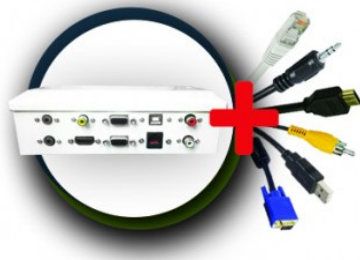
EDIS AUDIO VISUAL SELECTION



www.edisav.com
edis@edisav.com

Edis

CABLES KITS



CABLE BOX



Reference	Designation
2051550	Plug and Play 5m Cable Kit
2051551	Plug and Play 10m Cable Kit
2051552	Plug and Play 15m Cable Kit

Reference	Designation
0080048	Plug and Play cable Box

SOUNDBARS



IN-WALL AMPLIFIERS



Reference	Designation
0110125	EA125 40 Watt Stereo Soundbar Bluetooth, SD card, FM, USB input, mini-jack cables IR Remote Control - Europlug and UK adaptor
4082122	EA56 80 W Soundbar USB, SD Drive, RCA

Reference	Designation
0110035C	EA35C 30 Watt in-wall stereo amplifier, PC and AUX inputs with separate volume controls for each

ACTIVE SPEAKERS



Ref.0110015-40 & 4082214 Ref. 0110015A-80 BT Ref. 4082214 Ref. 4082000 Ref. 4082207

Reference	Designation
110015-40	Active speakers EA015 2x 20 W RMS 'C' Bracket wall mount, IR Remote Control
0110015-80 BT	Active speakers EA015 2x 40 W RMS Bluetooth , SD Card 'C' Bracket wall mount, IR Remote Control
4082140	Control Active speakers EA015 (UPTEC) 2x40W RMS with trigger 12V auto connect to projector
4082214	Active speakers EA015 (UPTEC) 2x20W RMS with trigger 12V auto connect to projector
4082000	Active speakers EA015 (UPTEC) 2x40W RMS, 'C' Bracket wall mount, IR Remote Control
4082207	Active speakers EA015 (UPTEC) 2x40W RMS, 'C' Bracket wall mount, Wired Remote Control

PROJECTOR CEILING MOUNTS



Ref. 9011105



Ref. 9011098



Ref. 9011112



Ref. 9011119



Ref. 9011126



Ref. 9011133

Reference	Designation
9011105	Ceiling Mount Fixed White, 12,5 cm Tilt 15° - max 10Kg
9011098	Ceiling Mount telescopic White 43-65 cm - Tilt 15° - max 10Kg
9011112	Ceiling Mount telescopic White, 65-100 cm - Tilt 15° - max 10Kg
9011119	Ceiling Mount telescopic White 86-147 cm - Tilt 15° - max 10Kg
9011126	Ceiling Mount telescopic White 111-198 cm - Tilt 15° - max 10Kg
9011133	Ceiling Mount telescopic White 158-300 cm - Tilt 15° - max 10Kg

ANTI-THEFT CABLES

Ref. 4040089



Ref. 4040110



Ref. 4040117



Ref. 4040096



Reference	Designation
4040089	Anti-theft steel cable single head
4040110	Anti-theft steel cable single head - 2 keys
4040117	Anti-theft steel cable single head - 2 keys
4040096	Extra key sets

CEILING SCREEN SUPPORT



Reference	Designation
9011077	Adjustable (from 51 to 74 cm), from 26 " to 55 " - 45Kg Max, , ceiling tilt : 180 °, tilt screen : + 5 / -15 ° Vesa max : 600x400 - channel for cables

LCD DESK MOUNTS



Ref. 9011091

LCD WALL MOUNTS FIXED



Ref. 9011056

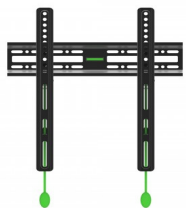


Ref. 9010471

Reference	Designation
9011091	25" - 2x10Kg Max - vertical tilt: +/- 15° Horizontal orientation : 240° - Vesa: 75/100 desk mount (Max 8cm)

Reference	Designation
9011056	Fixed 46" - 30Kg Max - depth : 1,8cm Vesa max : 200x200 - : GS
9010471	Fixed from 26" to 46" - 45Kg Max - depth : 2,75cm Vesa max : 400x400 - automatic security lock

LCD WALL MOUNTS TILT



Ref. 9011063



Ref. 9010658



Ref. 9010546



Ref. 9011070

LCD WALL MOUNTS AJUSTABLE

Reference	Designation
9011063	Tilt - from 26" at 47" - 50Kg Max Vesa Max : 400x400
9010658	Tilt - from 32" to 60" - 60Kg Max Vesa Max : 600x400

Reference	Designation
9010546	Tilt - from 26" at 47" - 50Kg Max Vesa Max : 400x400
9011070	Tilt - from 32" to 60" - 60Kg Max Vesa Max : 600x400

LCD WALL MOUNTS CANTILEVER



Ref. 9011084



Ref. 9010513



Ref. 9010485



Ref. 9010651

Reference	Designation
9011084	Cantilever 27" - 30Kg Max, vertical tilt: +/- 15° - horizontal, cable channel - standards : GS
9010513	Cantilever 37" - 25Kg Max - vertical tilt: +/- 13,8° - horizontal Orientation : up to 180° standards : UL, GS/TUV
9010485	Cantilever - from 26" to 46" - 45Kg Max - vertical tilt to the bottom: 15° - horizontal Orientation: 135°
9010651	Cantilever - from 37" to 65" - 68Kg Max - vertical tilt to the bottom: 15° - horizontal Orientation: 90°

MATRIX & SWITCHES



Ref. 9011049



Ref. 9011042



Ref. 9031032



Ref. 9031039



Ref. 9031105

Reference	Designation
9011049	Matrix VGA 2x2 - 2 inputs -> 2 output (Bandwidth 450 Mhz) - WXGA Max IR Remote Control - 60m Max downstream
9011042	Matrix HDMI 4x2 - 4 inputs -> 2 output, IR Remote Control - 10m upstream and 10m downstream 1080p Ma- RS232
9031032	Switch VGA 1 Optimum 2 inputs -> 2 output (Bandwidth 450 Mhz) - 2048x1536
9031039	IR remote control- 10m upstream and 10m downstream switch HDMI 4 inputs and 1 output
9031105	RS232 - IR Remote Control - metal box 1080p - self-powered

SPLITTERS VGA



Ref. 9030598



Ref. 9030164



Ref. 9030983



Ref. 9030990



Ref. 9030612



Ref. 9030619

Reference	Designation
9030598	Splitter VGA 2 Optimums - 1920x1440 at 60Hz (Bandwidth 250 Mhz) - Distance 65m max - (USB)
9030164	Splitter VGA 2 Optimums - 2048x1536 at 60Hz (Bandwidth 450 Mhz) - Distance 65m max - casing cascadable
9030983	Splitter VGA 4 Optimums - 2048x1536 at 60Hz (Bandwidth 450 Mhz) - Distance 65m max
9030990	Splitter VGA 8 Optimums - 2048x1536 at 60Hz (Bandwidth 450 Mhz) - Distance 65m max
9030612	Splitter VGA+audio 2 Optimums - 2048x1536 at 60Hz (Bandwidth 450 Mhz) - Distance 65m max - casing cascadable
9030619	Splitter VGA+audio 4 Optimums - 2048x1536 at 60Hz (Bandwidth 450 Mhz) - Distance 65m max - casing cascadable

SPLITTERS HDMI 1.4

Resolution 480p, 720i/p, 1080i/p, 4Kx2K 3D



Ref. 9031053



Ref. 9031077



Ref. 9031067

Reference	Designation
9031053	Splitter HDMI - 2 Optimums - HDCP supported - 15m input / 15m output max - metal box
9031077	Splitter HDMI - 4 Optimums - HDCP supported - 15m input / 15m output max - metal box
9031067	Splitter HDMI - 8 Optimums - HDCP supported - 15m input / 15m output max - metal box

Extenders



Ref. 9070001

Ref. 9070064



Ref. 9031084



Ref. 9070071



Ref. 9070077



Ref. 9070084

Reference	Designation
9070001	Extender KVM VGA/USB/PS2 on RJ45 - 150m
9070071	Extender VGA+audio on RJ45 - 150m Distance VGA+audio on RJ45 - 150m
9070064	Extender USB on RJ45 - 50m max Distance USB on RJ45 - 50m max
9070077	Extender USB with Cable 0,2m on RJ45 - 45m max
9031084	Extender HDMI + IR offset - monitOptimuming - 60m (Cat6)
9070084	HDMI repeater 1,3 FF 20m 3D/1080p 225MHz - 6,75Gbps

WIRELESS TRANSMITTERS

CONVERTORS



Ref. 9050887



Ref. 9050888

Reference	Designation	Reference	Designation
9031098	Transmitter HDBiT HDMI wireless + IR offset - 200m	9050887	Convertor VGA+audio jack 3,5 to HDMI
		9050888	Convertor HDMI to VGA+audio jack 3,5

CONVERTOR MHL

MULTIMEDIA STREAMING



Reference	Designation
9030913	Convertor MHL + micro USB to HDMI



Reference	Designation
9057113	Multimedia streaming box with 4GB on board

CABLE REEL HP - 100m



Reference	Designation
2063000	Cable reel HP - 2x0,75mm ² - Black/ROptimumge
2063007	Cable reel HP - 2x1,5mm ² - Black/ROptimumge
2063014	Cable reel HP - 2x2,5mm ² - Black/ROptimumge
2063021	Cable reel HP - 2x2,5mm ² - White

CABLES JACK 3.5 / 2XRCA M/M - SCREENED



Reference	Designation
2060097	Audio Cable Stereo Jack 3,5 M / 2xRCA M - 3m
2061579	Audio Cable Stereo Jack 3,5 M / 2xRCA M - 5m
2061580	Audio Cable Stereo Jack 3,5 M / 2xRCA M - 10m

CABLES 3.5 MINI JACK M/M SCREENED



Reference	Designation
2061747	Audio Cable Stereo Jack 3,5 M/M - 0,6m
2061677	Audio Cable Stereo Jack 3,5 M/M - 1,5m
2061341	Audio Cable Stereo Jack 3,5 M/M - 2,5m
2061376	Audio Cable Stereo Jack 3,5 M/M - 5m
2061586	Audio Cable Stereo Jack 3,5 M/M - 10m
2061589	Audio Cable Stereo Jack 3,5 M/M - 15m
2061596	Audio Cable Stereo Jack 3,5 M/M - 20m

CABLES 2XRCA M/M SCREENED



Reference	Designation
2061935	Audio Cable Stereo 2xRCA M/M - 2,5m
2061942	Audio Cable Stereo 2xRCA M/M - 5m
2061949	Audio Cable Stereo 2xRCA M/M - 10m
2061956	Audio Cable Stereo 2xRCA M/M - 15m

AUDIO CABLES OPTICAL TOSLINK - DIAM 2,2MM



Reference	Designation
2070490	Audio Cable optical Toslink Black - 2m
2052091	Audio Cable optical Toslink Black - 3m
2070462	Audio Cable optical Toslink Black - 5m

XLR ENTENDORS BALANCED



Reference	Designation
2061719	Extender Micro/balanced XLR M/F - 6m

AUDIO ADAPTORS



Ref. 1070224

Ref. 2060579

Ref. 1070245

Ref. 2060475

Ref. 2060516

Ref. 2060517

Ref. 2052098

Ref. 1070615

Reference	Designation
2060516	Adaptor Jack 3.5 F / 2 x RCA M - 0,2m
1070224	Adaptor 2 x RCA F / Jack 3.5 M
2060517	Adaptor 2 x RCA F / Jack 3.5 M - 0,2m
2060579	Adaptor 2 x Jack 3.5 F / Jack 3.5 M - 0,2m
2052098	Adaptor 2 x Jack 3.5 F / Jack 3.5 M - 0,3m
1070245	Adaptor Jack 3.5 F / Jack 6,35 M - Stereo
1070615	Adaptor Jack 6,35 F / Jack 3.5 M - Stereo
2060475	Coupler Jack 3.5 F/F Stereo

ADAPTORS HDMI/VGA



Ref. 2051901

Ref. 2061754

Ref. 2051676

Ref. 2051213

Reference	Designation
2051901	Adaptor mini-HDMI M / VGA HD15 F - 0,15m
2061754	Adaptor VGA+USB M / HDMI F (Full HD 60Hz) - 0,2m
2051676	Adaptor HDMI M / VGA HD15 F - 0,15m
2051213	Adaptor HDMI M / VGA HD15 + audio Jack 3,5mm F - 0,2m

ADAPTORS DVI/VGA



Ref. 1070924

Ref. 1070343

Ref. 1070350

Ref. 1070742

Reference	Designation
1070924	Adaptor mini-DVI M / VGA HD15 F - 0,2m
1070343	Adaptor DVI-I (24+5) M / VGA HD15 F
1070350	Adaptor DVI-I (24+5) F / VGA HD15 M
1070742	Adaptor DVI-D (24+5) M / VGA HD15 F

ADAPTORS HDMI/DVI



Ref. 1070371

Ref. 1070329

Ref. 1070336

Ref. 1070896

Reference	Designation
1070371	Adaptor HDMI F / DVI-D (24+1) F
1070329	Adaptor HDMI F / DVI-D (24+1) M
1070336	Adaptor HDMI M / DVI-D (24+1) F
1070896	Adaptor HDMI F / DVI-I (24+1) M

ADAPTORS HDMI/MINI HDMI ADAPTOR HDMI/MICRO HDMI



Ref. 2051669



Ref. 2052007



Ref. 2052014



Ref. 1070855



Ref. 2040713



Ref. 2040714

Reference	Designation	Reference	Designation
2051669	Adaptor HDMI F / Mini-HDMI M	1070855	Adaptor HDMI F / Micro-HDMI M
2052007	Adaptor HDMI M / Mini-HDMI F	2040713	Adaptor HDMI M/F - 90°
2052014	Adaptor Mini-HDMI M / HDMI F - 0,2m	2040714	HDMI Adapter M/F - flat 270° and flat

HDMI COUPLER - GENDER CHANGERS & BOOSTER F/F



Ref. 2051115



Ref. 1070147



Ref. 1070154



Ref. 1070378



Ref. 2040734

Reference	Designation
2051115	Coupler HDMI F/F
1070147	Gender changer VGA HD15 M/M
1070154	Gender changer VGA HD15 M/F
1070378	Gender changer VGA HD15 F/F
2040734	Booster/repeater 35m HDMI F/F (max 20m input - 15m output)

VGA CABLES STD M/F



Reference	Designation
2050026	VGA Cable STD ferrites M/F - 5m
2050054	VGA Cable STD ferrites M/F - 25m

VGA Cable Optimum M/M

Reference	Designation
2050859	VGA Cable Optimum + ferrites Full Pin M/M - 3 coax - AWG30 - 1m
2050866	VGA Cable Optimum + ferrites Full Pin M/M - 3 coax - AWG30 - 1,8m
2050873	VGA Cable Optimum + ferrites Full Pin M/M - 3 coax - AWG30 - 3m
2050880	VGA Cable Optimum + ferrites Full Pin M/M - 3 coax - AWG30 - 5m
2050887	VGA Cable Optimum + ferrites Full Pin M/M - 3 coax - AWG30 - 10m
2050894	VGA Cable Optimum + ferrites Full Pin M/M - 3 coax - AWG28 - 15m
2050901	VGA Cable Optimum + ferrites Full Pin M/M - 3 coax - AWG28 - 20m
2050908	VGA Cable Optimum + ferrites Full Pin M/M - 3 coax - AWG28 - 25m
2050915	VGA Cable Optimum + ferrites Full Pin M/M - 3 coax - AWG28 - 30m
2050929	VGA Cable Optimum + ferrites Full Pin M/M - 3 coax - AWG28 - 50m



VGA Cable Optimum M/F

Reference	Designation
2050782	VGA Cable Optimum + ferrites Full Pin M/F - 3 coax - AWG30 - 1m
2050789	VGA Cable Optimum + ferrites Full Pin M/F - 3 coax - AWG30 - 1,8m
2050796	VGA Cable Optimum + ferrites Full Pin M/F - 3 coax - AWG30 - 3m
2050803	VGA Cable Optimum + ferrites Full Pin M/F - 3 coax - AWG30 - 5m
2051136	VGA Cable Optimum + ferrites Full Pin M/F - 3 coax - AWG30 - 8m
2050810	VGA Cable Optimum + ferrites Full Pin M/F - 3 coax - AWG30 - 10m
2050817	VGA Cable Optimum + ferrites Full Pin M/F - 3 coax - AWG28 - 15m
2050824	VGA Cable Optimum + ferrites Full Pin M/F - 3 coax - AWG28 - 20m
2050831	VGA Cable Optimum + ferrites Full Pin M/F - 3 coax - AWG28 - 25m
2050838	VGA Cable Optimum + ferrites Full Pin M/F - 3 coax - AWG28 - 30m
2050845	VGA Cable Optimum + ferrites Full Pin M/F - 3 coax - AWG28 - 40m
2050852	VGA Cable Optimum + ferrites Full Pin M/F - 3 coax - AWG28 - 50m



VGA Cable M/M PLATINUM

Reference	Designation
2051715	VGA Cable "Platinum" Full Pin M/M - 5 coax - AWG26 - 1m
2051712	VGA Cable "Platinum" Full Pin M/M - 5 coax - AWG26 - 2m
2051719	VGA Cable "Platinum" Full Pin M/M - 5 coax - AWG26 - 3m
2051726	VGA Cable "Platinum" Full Pin M/M - 5 coax - AWG26 - 5m
2081817	VGA Cable "Platinum" Full Pin M/M - 5 coax - AWG26 - 8m
2051733	VGA Cable "Platinum" Full Pin M/M - 5 coax - AWG26 - 10m
2051740	VGA Cable "Platinum" Full Pin M/M - 5 coax - AWG26 - 15m
2051747	VGA Cable "Platinum" Full Pin M/M - 5 coax - AWG26 - 20m
2051754	VGA Cable "Platinum" Full Pin M/M - 5 coax - AWG26 - 30m



VGA Cable M/F PLATINUM

Reference	Designation
2051761	VGA Cable "Platinum" Full Pin M/F - 5 coax - AWG26 - 1m
2051768	VGA Cable "Platinum" Full Pin M/F - 5 coax - AWG26 - 2m
2051775	VGA Cable "Platinum" Full Pin M/F - 5 coax - AWG26 - 3m
2051782	VGA Cable "Platinum" Full Pin M/F - 5 coax - AWG26 - 5m
2051789	VGA Cable "Platinum" Full Pin M/F - 5 coax - AWG26 - 10m
2051796	VGA Cable "Platinum" Full Pin M/F - 5 coax - AWG26 - 15m
2051803	VGA Cable "Platinum" Full Pin M/F - 5 coax - AWG26 - 20m
2051810	VGA Cable "Platinum" Full Pin M/F - 5 coax - AWG26 - 30m



VGA Cable + audio Full Pin M/M PLATINUM

Reference	Designation
2051613	VGA Cable + audio "Platinum" Full Pin - AWG26 - M/M - 1m
2051620	VGA Cable + audio "Platinum" Full Pin - AWG26 - M/M - 2m
2051627	VGA Cable + audio "Platinum" Full Pin - AWG26 - M/M - 3m
2051634	VGA Cable + audio "Platinum" Full Pin - AWG26 - M/M - 5m
2051683	VGA Cable + audio "Platinum" Full Pin - AWG26 - M/M - 8m
2051641	VGA Cable + audio "Platinum" Full Pin - AWG26 - M/M - 10m
2051648	VGA Cable + audio "Platinum" Full Pin - AWG26 - M/M - 15m
2051655	VGA Cable + audio "Platinum" Full Pin - AWG26 - M/M - 20m
2051662	VGA Cable + audio "Platinum" Full Pin - AWG26 - M/M - 30m



HDMI CABLES 2.0 M/M STD

Reference	Designation
2061761	HDMI Cable 2.0 - AWG30 - 4Kx2K@60Hz - M/M - 0,5m
2061768	HDMI Cable 2.0 - AWG30 - 4Kx2K@60Hz - M/M - 1m
2061775	HDMI Cable 2.0 - AWG30 - 4Kx2K@60Hz - M/M - 1,8m
2061782	HDMI Cable 2.0 - AWG30 - 4Kx2K@60Hz - M/M - 3m
2061789	HDMI Cable 2.0 - AWG28 - 4Kx2K@60Hz - M/M - 5m
2061796	HDMI Cable 2.0 - AWG26 - 4Kx2K@60Hz - M/M - 10m
2061803	HDMI Cable 2.0 - AWG24 - 4Kx2K@60Hz - M/M - 15m
2061810	HDMI Cable 2.0 - AWG24 - 4Kx2K@60Hz - M/M - 20m
2061817	HDMI Cable 2.0 - AWG24 - with répéteur - 4Kx2K@60Hz - 30m
2061824	HDMI Cable 2.0 - AWG24 - with répéteur - 4Kx2K@60Hz - 40m



HDMI CABLES 2.0 M/F STD

Reference	Designation
2061831	HDMI Extender 2.0 - AWG30 - 4Kx2K@60Hz - M/F - 0,5m
2061838	HDMI Extender 2.0 - AWG30 - 4Kx2K@60Hz - M/F - 1m
2061845	HDMI Extender 2.0 - AWG30 - 4Kx2K@60Hz - M/F - 2m
2061848	HDMI Extender 2.0 - AWG30 - 4Kx2K@60Hz - M/F - 3m
2061852	HDMI Extender 2.0 - AWG28 - 4Kx2K@60Hz - M/F - 5m
2061859	HDMI Extender 2.0 - AWG26 - 4Kx2K@60Hz - M/F - 10m



HDMI CABLES 2.0 M/M PLATINUM

Reference	Designation
2061866	HDMI Cable 2.0 «Platinum» - AWG26 - 4Kx2K@60Hz - M/M - 1m
2061872	HDMI Cable 2.0 «Platinum» - AWG26 - 4Kx2K@60Hz - M/M - 1,8m
2061879	HDMI Cable 2.0 «Platinum» - AWG26 - 4Kx2K@60Hz - M/M - 3m
2061886	HDMI Cable 2.0 «Platinum» - AWG26 - 4Kx2K@60Hz - M/M - 5m
2061893	HDMI Cable 2.0 «Platinum» - AWG26 - 4Kx2K@60Hz - M/M - 8m
2061900	HDMI Cable 2.0 «Platinum» - AWG24 - 4Kx2K@60Hz - M/M - 10m
2061907	HDMI Cable 2.0 «Platinum» - AWG24 - 4Kx2K@60Hz - M/M - 15m
2061914	HDMI Cable 2.0 «Platinum» - AWG24 - 4Kx2K@60Hz - M/M - 20m
2061921	HDMI Cable 2.0 with repeteur - AWG24 - 4Kx2K@60Hz - M/M - 30m
2061928	HDMI Cable 2.0 with repeteur - AWG24 - 4Kx2K@60Hz - M/M - 40m



HDMI 2.0 M/M SPECIAL SHEATH

Reference	Designation
2061984	Optical Fibre Cable HDMI 2.0 - AWG28 - 4Kx2K@60Hz - M/M - 5m
2061991	Optical Fibre Cable HDMI 2.0 - AWG28 - 4Kx2K@60Hz - M/M - 8m
2061998	Optical Fibre Cable HDMI 2.0 - AWG28 - 4Kx2K@60Hz - M/M - 10m
2062005	Optical Fibre Cable HDMI 2.0 - AWG28 - 4Kx2K@60Hz - M/M - 15m
2062012	Optical Fibre Cable HDMI 2.0 - AWG28 - 4Kx2K@60Hz - M/M - 20m
2062019	Optical Fibre Cable HDMI 2.0 - AWG28 - 4Kx2K@60Hz - M/M - 30m
2061963	Optical Fibre Cable HDMI 2.0 - AWG28 - 4Kx2K@60Hz - M/M - 50m
2061970	Optical Fibre Cable HDMI 2.0 - AWG28 - 4Kx2K@60Hz - M/M - 75m
2061977	Optical Fibre Cable HDMI 2.0 - AWG28 - 4Kx2K@60Hz - M/M - 100m



CABLES DVI-A / VGA



Reference	Designation
2040221	DVI-A Cable (12+5) to VGA - M/M - 1,8m
2040228	DVI-A Cable (12+5) to VGA - M/M - 3m
2040235	DVI-A Cable (12+5) to VGA - M/M - 5m
2040242	DVI-A Cable (12+5) to VGA - M/M - 10m

CABLES DVI-D / HDMI



Reference	Designation
2040186	DVI-D Cable Single Link (18+1) to HDMI - M/M - 1,8m
2040193	DVI-D Cable Single Link (18+1) to HDMI - M/M - 3m
2040200	DVI-D Cable Single Link (18+1) to HDMI - M/M - 5m
2040207	DVI-D Cable Single Link (18+1) to HDMI - M/M - 10m

CABLES DVI-D (24+1) DUAL LINK EXTENSIONS DVI-D (24+1) DUAL LINK



Reference	Designation
2040102	DVI-D Cable Dual Link (24+1) M/M - 1m
2040109	DVI-D Cable Dual Link (24+1) M/M - 1,8m
2040116	DVI-D Cable Dual Link (24+1) M/M - 3m
2040123	DVI-D Cable Dual Link (24+1) M/M - 5m
2040130	DVI-D Cable Dual Link (24+1) M/M - 10m
2040137	DVI-D Cable Dual Link (24+1) M/M - 15m



Reference	Designation
2050311	Extender DVI-D Dual Link (24+1) M/F - 2m
2040270	Extender DVI-D Dual Link (24+1) M/F - 3m
2040256	Extender DVI-D Dual Link (24+1) M/F - 5m
2040263	Extender DVI-D Dual Link (24+1) M/F - 10m

CABLES DISPLAY OPTIMUM

Reference	Designation
2040332	Cable Display Optimum 1.2 M/M - AWG30 - 1,8m
2040339	Cable Display Optimum 1.2 M/M - AWG30 - 3m
2040446	Cable Display Optimum 1.2 M/M - AWG28 - 5m
2040447	Cable Display Optimum 1.1 M/M - AWG28 - 10m
2040776	Cable Display Optimum 1.1 M/M - AWG26 - 15m
2040783	Cable Display Optimum 1.1 M/M - AWG26 - 20m



Reference	Designation
2051353	Cable Display Optimum M to DVI-D (24+1) M - AWG30 - 1,8m
2051355	Cable Display Optimum M to DVI-D (24+1) M - AWG30 - 3m
2051356	Cable Display Optimum M to DVI-D (24+1) M - 5m



Reference	Designation
2052028	Cable Display Optimum 1.2 M to HDMI M - AWG30 - 1m
2052035	Cable Display Optimum 1.2 M to HDMI M - AWG30 - 2m
2052042	Cable Display Optimum 1.2 M to HDMI M - AWG30 - 3m
2052049	Cable Display Optimum 1.2 M to HDMI M - AWG28 - 5m



ADAPTORS DISPLAY OPTIMUM



Ref. 2040325



Ref. 2052056



Ref. 2051150



Ref. 2051908



Ref. 2052063



Ref. 2052084

Reference	Designation
2040325	Adaptor Display Optimum M / DVI-I (24+5) F - monobloc
2051908	Adaptor Display Optimum M / DVI-I (24+5) F - AWG30 - 0,2m
2052056	Adaptor Display Optimum 1.2 M / HDMI F type A - monobloc
2052063	Adaptor Display Optimum 1.2 M / HDMI F type A - AWG32 - 0,2m
2051150	Adaptor Display Optimum M / VGA F - AWG30 - 0,2m
2052084	Adaptor Display Optimum M / HDMI F + DVI F + VGA F - Full HD 60Hz - 0,25m

CABLE MINI DISPLAY OPTIMUM

Reference	Designation
2051880	Cable Mini Display Optimum to Display Optimum – 1m
2052119	Cable Mini Display Optimum to Display Optimum – 2m



ADAPTORS MINI DISPLAY OPTIMUM



Ref. 2040763



Ref. 2040531



Ref. 2040573



Ref. 2051388



Ref. 2051915

Reference	Designation
2040763	Adaptor Mini Display Optimum 1.2 M / Display Optimum F – 0,2m
2040531	Adaptor Mini Display Optimum 1.2 M / VGA F – 0,2m
2040573	Adaptor Mini Display Optimum 1.2 M / HDMI 1.4 F – 0,2m
2051388	Adaptor Mini Display Optimum M / DVI-I (24+5) F – 0,2m
2051915	Adaptor Mini Display Optimum M / DVI-D (24+1) + VGA + HDMI F – 0,2m

ADAPTORS USB3.1 TYPE C



Ref. 9051245



Ref. 2052077

Reference	Designation
9051245	Adaptor USB3.1 Type C M / VGA F - 0.2m
9051252	Adaptor USB3.1 Type C M / HDMI 1,4 F – 0.2m
9051259	Adaptor USB3.1 Type C M / DVI-I F – 0.2m
9051266	Adaptor USB3.1 Type C M / andhernand RJ45 F Giga – 0.1m
9051273	Adaptor USB3.1 Type C M / DisplayOptimum 1,2 F – 0.2m
9051280	Adaptor USB3.1 Type C M / mini-DisplayOptimum 1,2 F – 0.2m
2052077	Adapter USB3.1 Type C M to 2xUSB3.0A F + HDMI F + RJ45 + SD card reader - 0.2m

MAGNETIC CABLE



Reference	Designation
2090716	Magnetic USB Cable A to micro USB – 1m
2090723	Magnetic Cable USB A to micro USB + Lightning - 1m

DONGLE MICRO-USB



Reference	Designation
2090730	Magnetic Dongle Micro-USB

EXTENDER USB2.0 AMPLIFIED EXTENDER USB3.0 AMPLIFIED



Reference	Designation
-----------	-------------

2090298 Amplifier USB 2.0 AA M/F – 0,2m

Reference	Designation
-----------	-------------

2090667 Amplified USB Extender 3.0 AA M/F – 5m

EXTENDER USB2.0 AMPLIFIED + MAINS SUPPLY

Reference	Designation
-----------	-------------

- 2090674 Amplified USB Extender 2.0 AA M/F - 5m (power supply option)
- 2090681 Amplified USB Extender 2.0 AA M/F - 10m (power supply option)
- 2090688 Amplified USB Extender 2.0 AA M/F - 15m (power supply option)
- 2090695 Amplified USB Extender 2.0 AA M/F - 20m (power supply option)
- 2090702 Power supply option for 2090674-2090681-2090688-2090695

Ref. 2090674



Ref. 2090702

EXTENDER USB A-A M/F



Reference	Designation
-----------	-------------

- 2090065 USB Extender 2.0 AA M/F Black – 1m
- 2090072 USB Extender 2.0 AA M/F Black – 1,8m
- 2090079 USB Extender 2.0 AA M/F Black – 3m
- 2090086 USB Extender 2.0 AA M/F Black – 5m

USB CABLES A-A M/M



Reference	Designation
-----------	-------------

- 2090009 USB Cable 2.0 AA M/M Black – 1m
- 2090016 USB Cable 2.0 AA M/M Black – 1,8m
- 2090023 USB Cable 2.0 AA M/M Black – 3m
- 2090030 USB Cable 2.0 AA M/M Black – 5m
- 2090492 USB Cable 2.0 AA M/M Beige – 2m
- 2090513 USB Cable 2.0 AA M/M Beige – 5m

USB CABLES A-B M/M

Reference	Designation
-----------	-------------

- 2090310 USB Cable 2.0 AB M/M Black – 0,5m
- 2090037 USB Cable 2.0 AB M/M Black – 1m
- 2090044 USB Cable 2.0 AB M/M Black – 1,8m
- 2090051 USB Cable 2.0 AB M/M Black – 3m
- 2090058 USB Cable 2.0 AB M/M Black – 5m
- 2090060 USB Cable 2.0 AB M/M por interactividad AWG28/24 - Black –1,8m
- 2090059 USB 2.0 Cable AB M/M Interactivity Port AWG28/24 - Black – 5m
- 2090659 USB 2.0 Cable AB M/M Amplified with Ferrites - 5m
- 2090660 USB 2.0 Cable AB M/M Amplified with Ferrites – 10m

Ref. 2090310



Ref. 2090659



RJ45 CAT6 FTP 10 COLOURS AVAILABLE



EXTENSIONS SECTEUR C13 / C14



Reference	Designation	Reference	Designation
2015556	CAT6 Cable FTP Grey - 0,25m	2020490	Extender power cable C13 / C14 - 0,5m
2012498	CAT6 Cable FTP Grey - 0,5m	2020240	Extender power cable C13 / C14 - 1m
2012505	CAT6 Cable FTP Grey - 0,7m	2020128	Extender power cable C13 / C14 - 1,8m
2012512	CAT6 Cable FTP Grey - 1m	2020135	Extender power cable C13 / C14 - 3m
2012519	CAT6 Cable FTP Grey - 1,5m	2020142	Extender power cable C13 / C14 - 5m
2012526	CAT6 Cable FTP Grey - 2m		
2012533	CAT6 Cable FTP Grey - 3m		
2014456	CAT6 Cable FTP Grey - 4m		
2012540	CAT6 Cable FTP Grey - 5m		
2012547	CAT6 Cable FTP Grey - 7m		
2012554	CAT6 Cable FTP Grey - 10m		
2012561	CAT6 Cable FTP Grey - 15m		
2012568	CAT6 Cable FTP Grey - 20m		
2012575	CAT6 Cable FTP Grey - 25m		
2012582	CAT6 Cable FTP Grey - 30m		
2012589	CAT6 Cable FTP Grey - 50m		
2017474	CAT6 Cable FTP Grey - 100m		

PANELS (EMPTY)



Ref. 8060213



Ref. 8060229



Ref. 8060231

Reference	Designation
8060213	19 " patch panel 1U - 16 blank RJ45
8060229	19 " patch panel 1U - 24 blank RJ45
8060231	19 " patch panel 2U - 32 blank RJ45

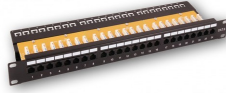
PANELS CAT5e CAT6 CAT6A



Ref. 8060782



Ref. 8060415



Ref. 8060789



Ref. 8062470



Ref. 8060895

Reference	Designation
8060782	19" patch panel 1U - 24 fitted with RJ45 Cat5e UTP
8060415	19" patch panel 1U - 24 fitted with RJ45 Cat5e FTP
8060789	19" patch panel 1U - 24 fitted with RJ45 Cat6 UTP
8062470	19" patch panel 1U - 24 fitted with RJ45 Cat6 FTP
8060895	19" patch panel 1U - 24 fitted with RJ45 Cat6a STP

CABLE PANELS



Ref. 8060325



Ref. 8060331

Reference	Designation
8060325	Cable panel 19" 2U - 5 rings
8060331	Cable panel 19" 1U - brush

BANK PANELS



Ref. 8060141



Ref. 8060150



Ref. 8060825

Reference	Designation
8060141	Blank panel 19" 1U - Black (plastic)
8060150	Blank panel 19" 2U - Black
8060825	Blank panel 19" 3U - Black